

Japanese language learning in the UK

Statistics on Japanese Exam Entries at GCSE, GCE (AS) Level and GCE (A2) Level, 2001 – 2014

As of April 2015, there are 335 schools teaching Japanese at primary and secondary level (including sixth forms) in the UK. This figure includes schools that are teaching Japanese outside of the curriculum, as well as those teaching it within the curriculum. You can see a full list of these schools on the Japan Foundation website [here](#).

The following exam entries figures are published by [CILT](#), the National Centre for Languages until 2011, or from [Edexcel](#) (for Japanese) and [JCQ](#) (for total number of MFL entries) after 2011.

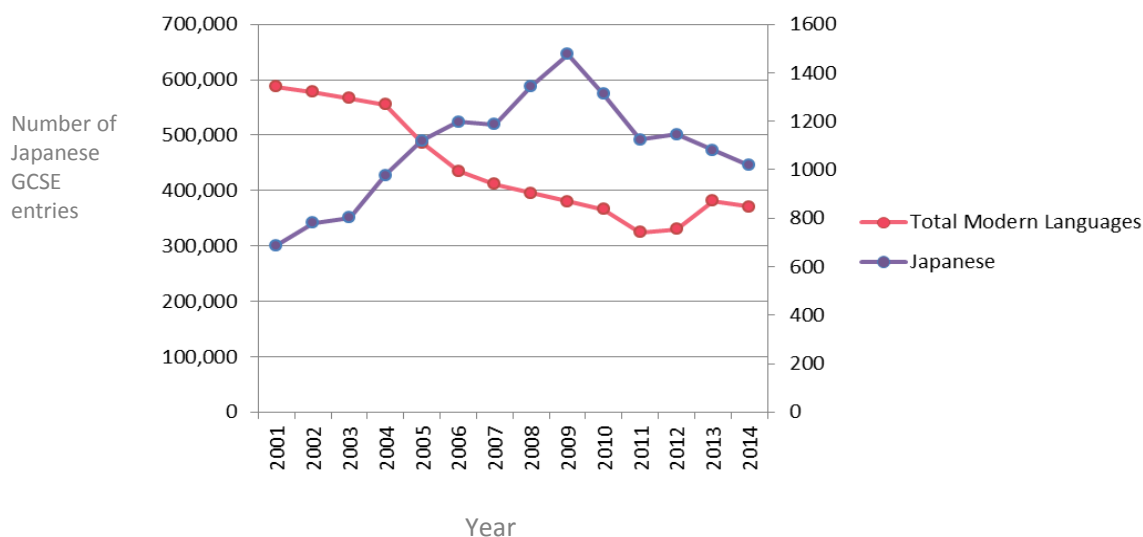
- Notes:
- Source: JCQ (Joint Council for Qualifications) final exam entry data; 2014 data is provisional.
 - The data covers all schools, FE and Adult colleges and individual entries in England, Wales and Northern Ireland.

GCSE

Year	2001	2002	2003	2004	2005	2006	2007	2008	2009	2010
Japanese	687	780	803	978	1,120	1,197	1,187	1,344	1,477	1,313 (+40)
Total Modern Languages	587,704	578,151	566,767	554,755	486,298	435,350	411,272	395,687	379,855	366,448

Year	2011	2012	2013	2014
Japanese (+ short course)	1,124 (+37)	1146 (+36)	1,083 (+32)	1019 (+34)
Total Modern Languages	324,651	330278	380,815	371,187

Number of GCSE Entries



Data on CILT website:

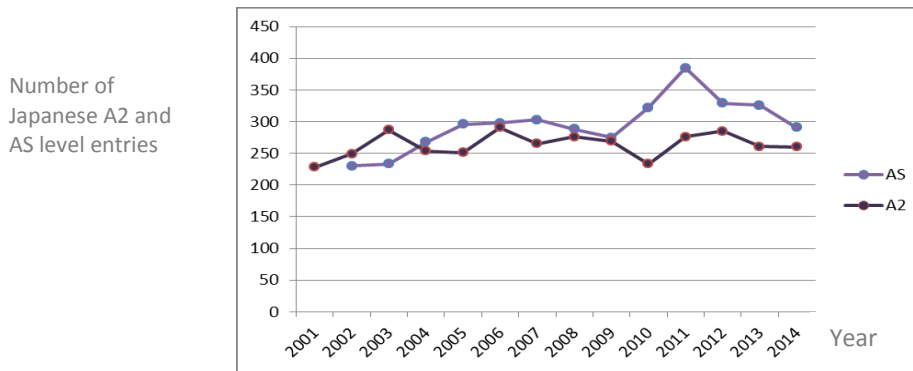
http://www.cilt.org.uk/home/research_and_statistics/statistics/secondary_statistics/gcse_exam_entries.aspx, then scroll down to "All Data". Alternatively, go [here](#) to download the Excel file directly.

GCE - AS and A-level

Year	2001	2002	2003	2004	2005	2006	2007	2008	2009	2010
Japanese GCE (AS) level		230	233	268	296	298	303	288	275	322
Japanese A2 level	228	249	287	254	251	291	265	276	269	233

Year	2011	2012	2013	2014
Japanese GCE (AS) level	385	329	326	291
Japanese A2 level	276	285	261	260

Number of Japanese AS and A-level Entries



A2-Level

(Data from <http://www.britishcouncil.org/sites/britishcouncil.uk2/files/language-trends-survey-2014.pdf>)

Year	2001	2002	2003	2004	2005	2006	2007	2008	2009	2010
Japanese	228	249	287	254	251	291	265	276	269	233
Total MFL	30,910	28,256	27,475	27,052	26,665	28,010	28,377	29,423	29,529	29,855

Year	2011	2012	2013	2014
Japanese A2	276	285	261	260
Total MFL	29,241	28,375	27,252	

Number of Japanese AS and A-level Entries

